



5141

Idea Box







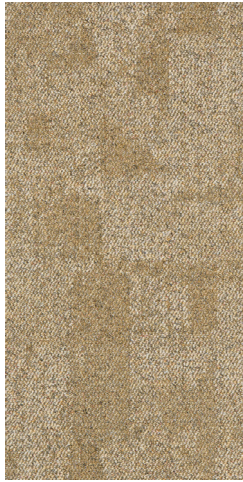


5141-04





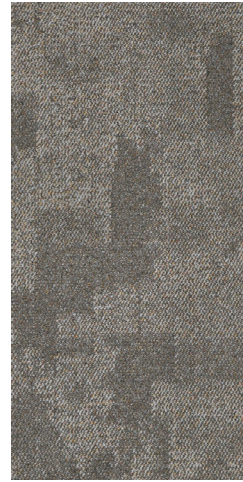




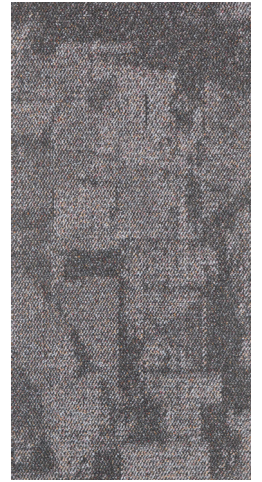
5141-01



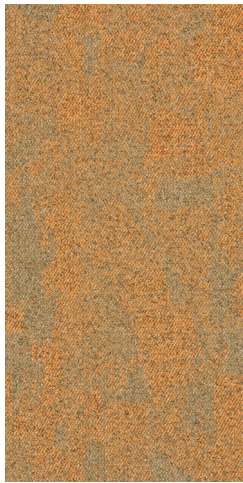
5141-02



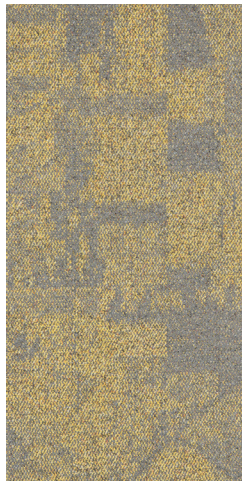
5141-03



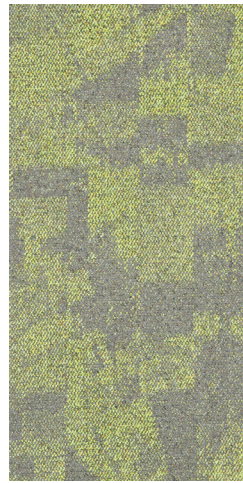
5141-04



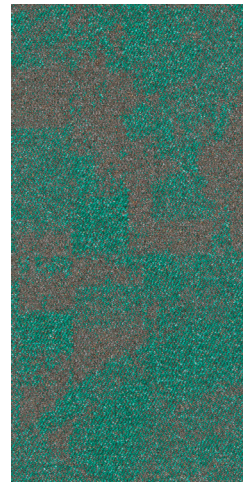
5141-11



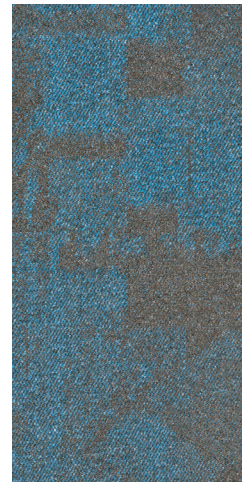
5141-21



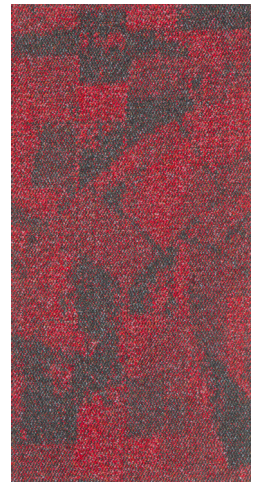
5141-22



5141-31



5141-32



5141-41





5142

Flow

















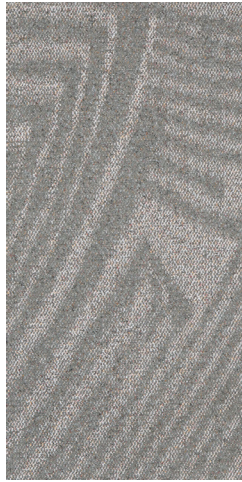




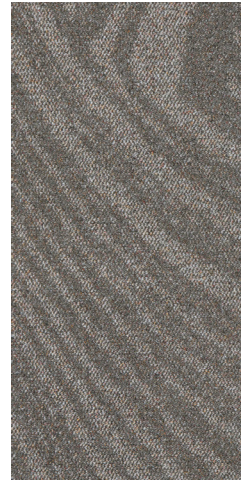




5142-01



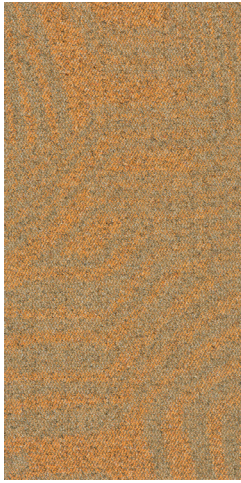
5142-02



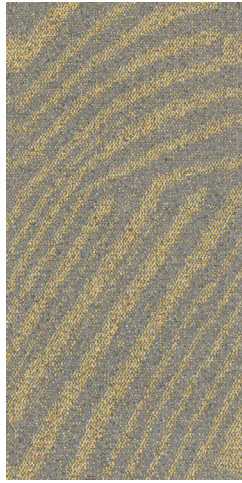
5142-03



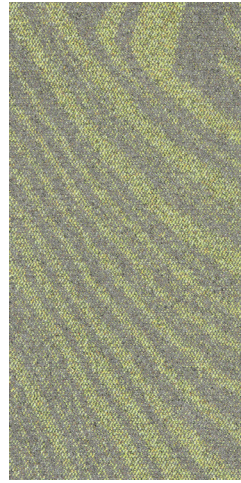
5142-04



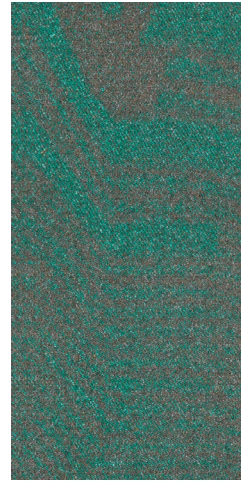
5142-11



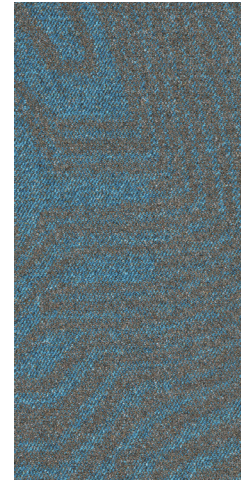
5142-21



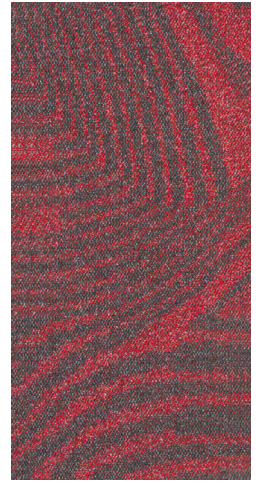
5142-22



5142-31



5142-32



5142-41



5143

Wave











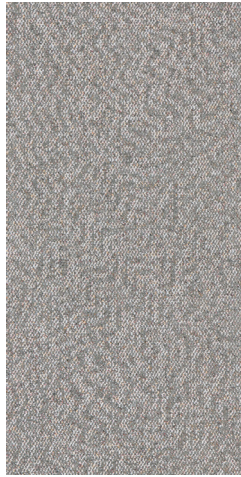




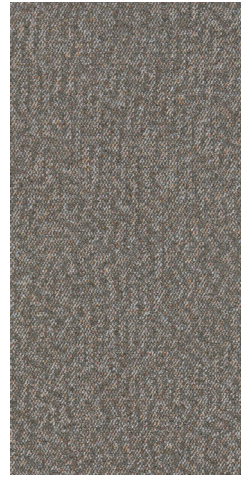




5143-01



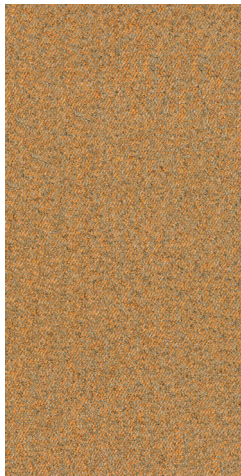
5143-02



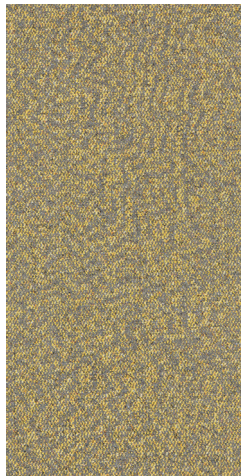
5143-03



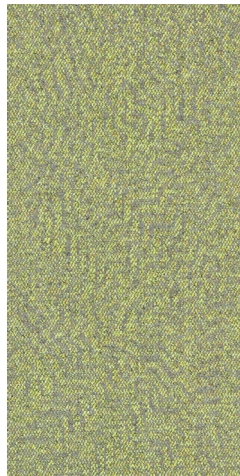
5143-04



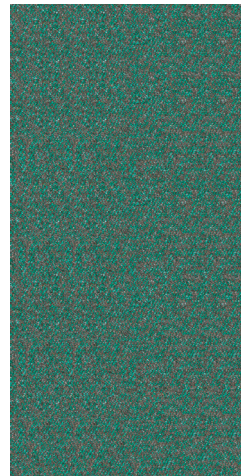
5143-11



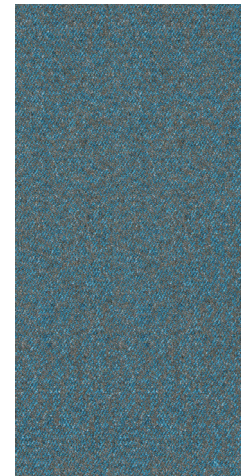
5143-21



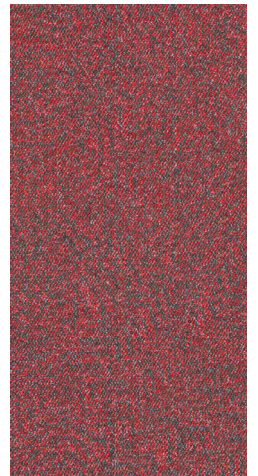
5143-22



5143-31



5143-32



5143-41





5144

Spark









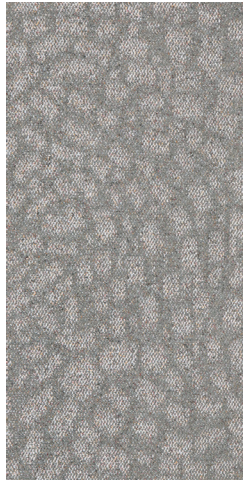




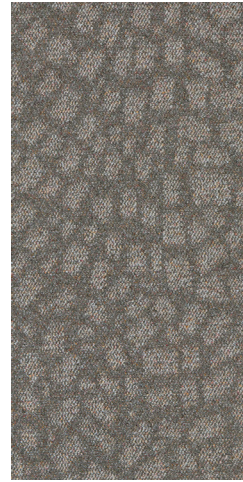




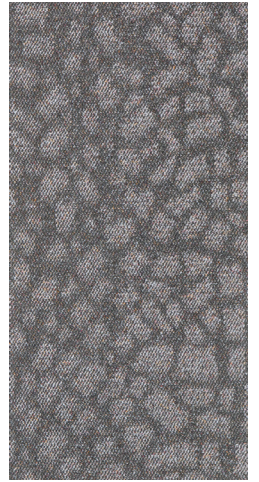
5144-01



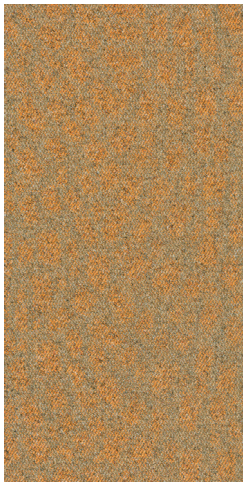
5144-02



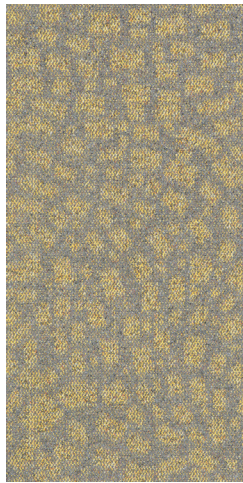
5144-03



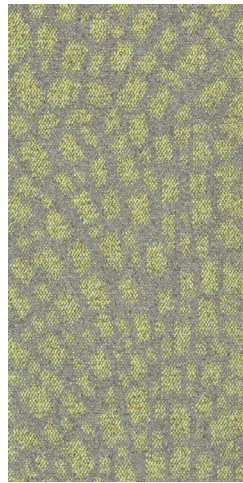
5144-04



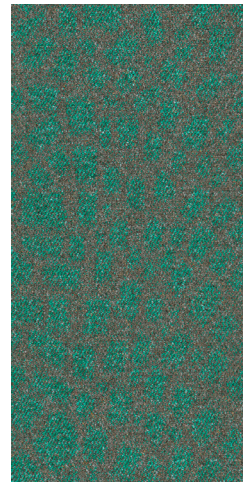
5144-11



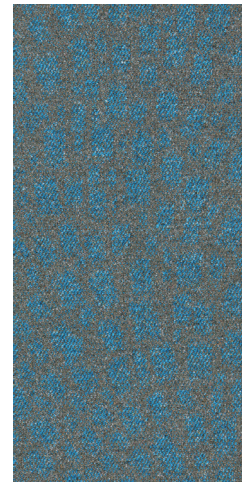
5144-21



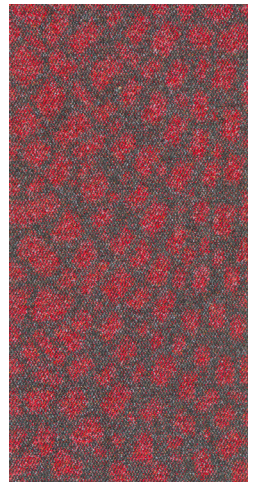
5144-22



5144-31



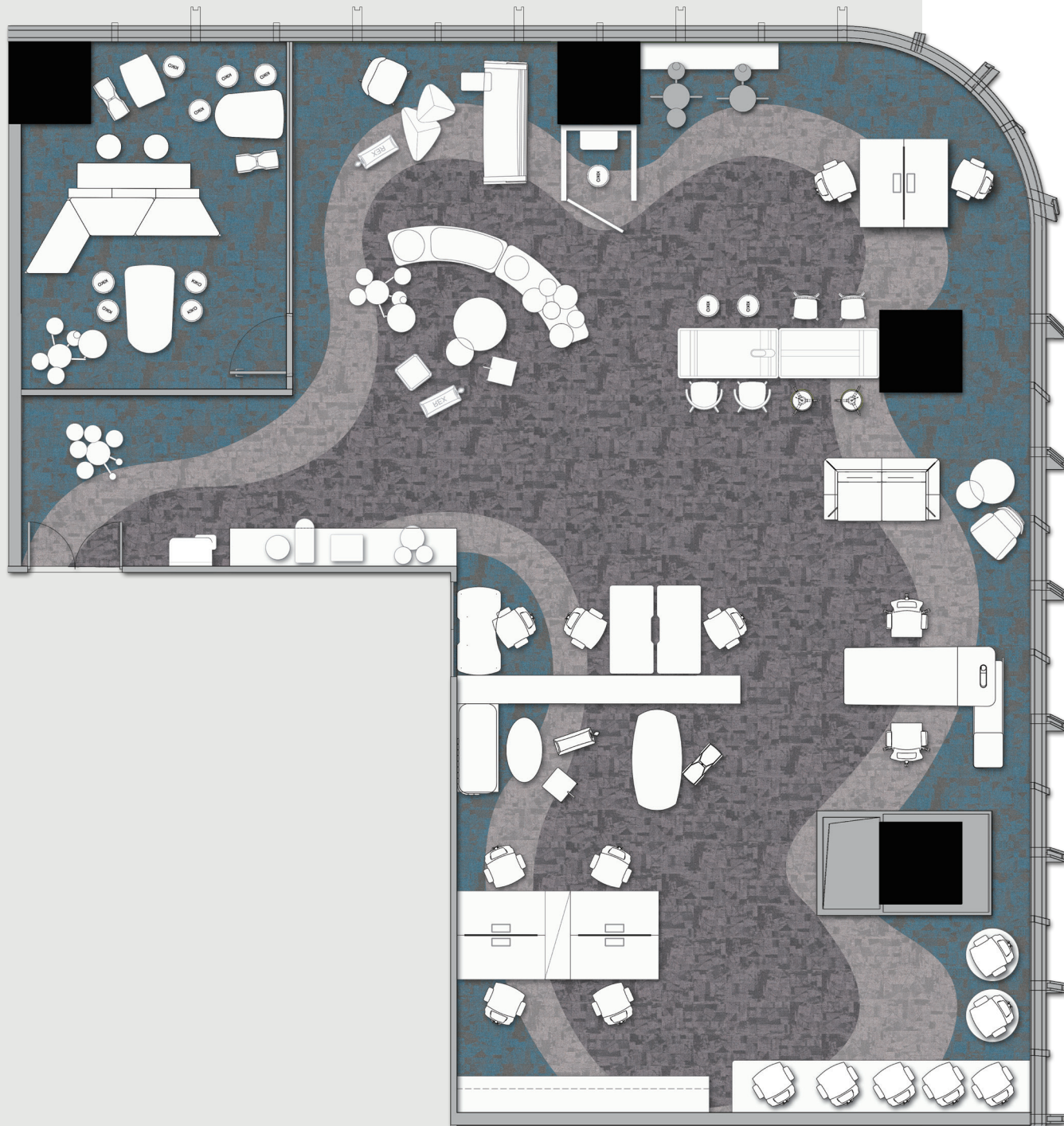
5144-32



5144-41



# Floorscape Inspiration



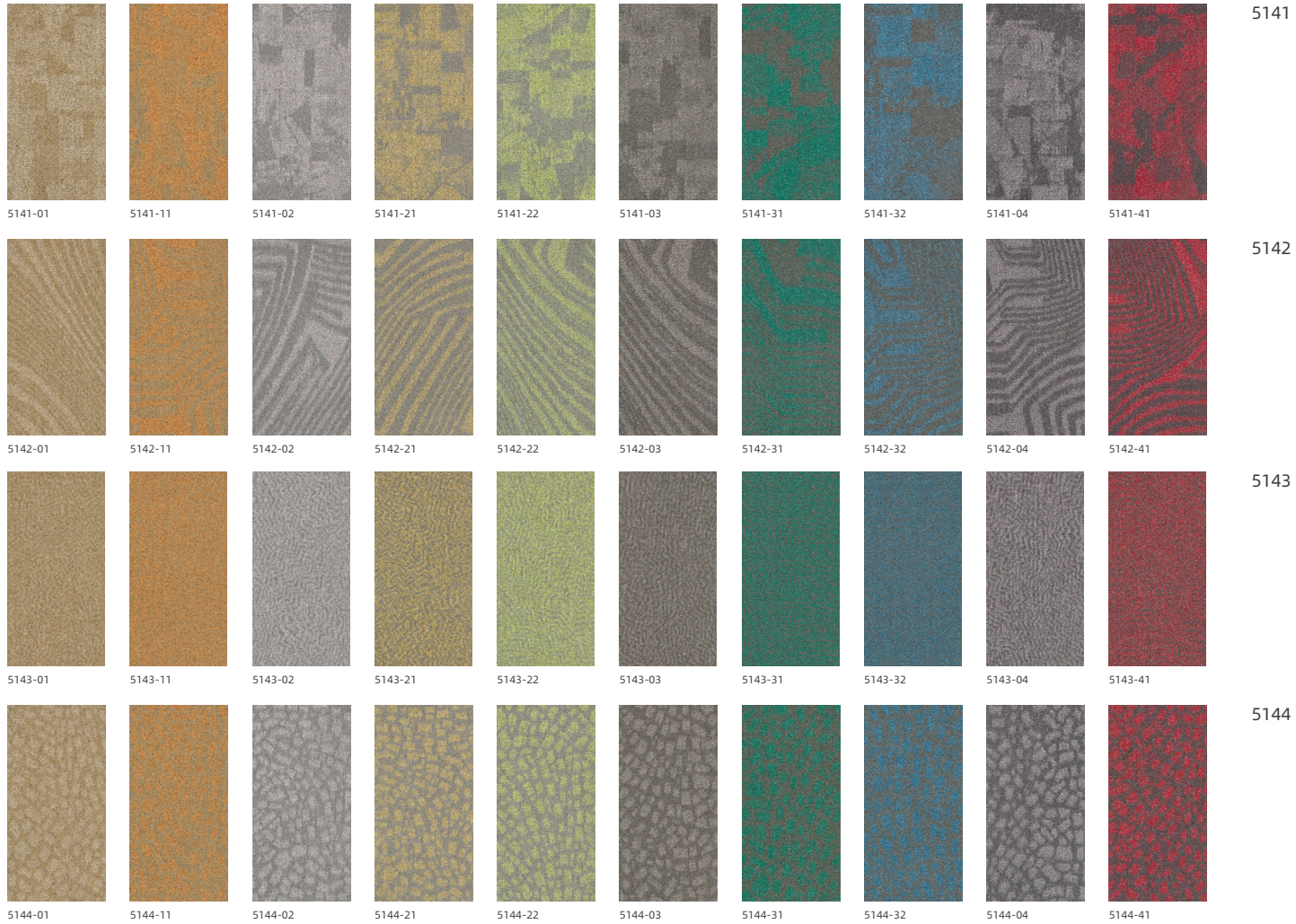


# Floorscape Inspiration





# Specification

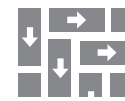


Style	Texture and Pattern
Tufted Construction	Multi-level Loop
Fiber	100% Nylon
Dye Method	Solution Dyed & Space Dyed
Gauge	1/12
Tufted Weight (g/m <sup>2</sup> )	650 ± 5%
Tile Size (mm)	500 × 1000
Pile Height (mm) Total	4.5 ± 0.5
Thickness (mm)	8.0 ± 0.5
Standard Backing	Cushion Back
Flammability	GB8624-2012 B1(C)
Area of Use	Commercial- Heavy Duty
Antistatic performance	ISO 6356:2012 ≤ 2.0 kV
Dimensional Stability	QB/T 2755-2005 ≤ 0.2%
Colour Fastness	QB/T 2755-2005 ≥ 4-5
Green Carpet(VOC)	CRI Green Label GLP100230

Recommended Installation Methods



Ashlar



Herringbone

